

# State of Wyoming Corner Record

(In compliance with the CORNER PERPETUATION AND FILING ACT, Wyoming Statutes, 1977, Section 36-11-101, et. seq., and the Rules and Regulations of the Board of Registration for Professional Engineers and Professional Land Surveyors)

Reverse side of this form may be used if more space is needed.

Record of original survey and citation of source of historical information (if corner is lost or obliterated). Description of corner monumentation evidence found and/or monument and accessories established to perpetuate the location of this corner. Sketch of relative location of monumen., accessories, and reference points with course and distance to adjacent corner(s) (if determined in this survey). Method and rationale for reestablishment of lost or obliterated corner.

No evidence of original monument or subsequent monumentation. There exists a fenceline to the South and to the East. The Northerly and Westerly extensions of these fencelines were projected to a point of intersection where I set a 5/8" x 24" rebar with 2" alum. cap, this being the best available evidence for this corner.

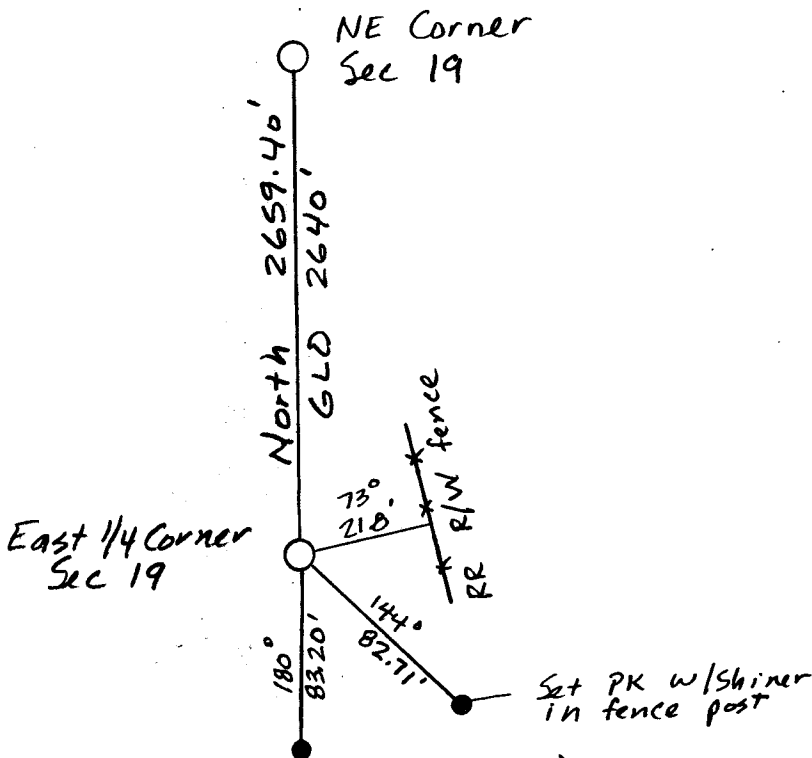
IME

T16N R69W

19 | 20 1/4

1999

LS 5134



Date of Field Work: 10-18-99 Office Reference: 879765 (Horse Creek) Blk 541 P.50

### CROSS INDEX DIAGRAM

1	2	3	4	5	6	7	8	9	10	11	12	13	14	15	16	17	18	19	20	21	22	23	24	25	
A																									
B	6																								
C		5																							
D			4																						
E				3																					
F					2																				
G	7																								
H		8																							
I			9																						
J				10																					
K					11																				
L	12																								
M		13																							
N			14																						
O				15																					
P	16				16																				
Q		17																							
R			18																						
S				19																					
T	19				20																				
U		20																							
V			21																						
W				22																					
X					23																				
Y						24																			
Z							25																		
	2	3	4	5	6	7	8	9	10	11	12	13	14	15	16	17	18	19	20	21	22	23	24	25	

Firm/Agency, Address

Inberg-Miller Engineers  
124 E. Main Street  
Riverton WY 82501

Telephone Number: 307-856-8136

This corner record was prepared by me or under my direction and supervision.

SEAL & SIGNATURE



10-29-99

RECORDED 11/03/1999 AT 12:40 PM REC# 263560 BK# 1538 PG# 399  
 DEBRA K. LATHROP, CLERK OF LARAMIE COUNTY, WY PAGE 1 OF 1

Corner Name: East 1/4 Corner Section: 19 T16N R69W; 6th P.M. Cross-Index No.: P-5  
 SBRPEPLS/PLSW: March 1994